

# CLASSROOM PODIUM QUICK START GUIDE

## CLASSIC PODIUM (TPS6L)

VERSION 1.1

Use the provided computer or connect your own device. Fanshawe's podiums are preinstalled with all the necessary software to support learning in the classroom.

<b>1 Turn on the Computer</b>	<b>2 Activate the Projector</b>	<b>3 Connect an External Device (Optional)</b>	<b>4 Adjust Source</b>
<ul style="list-style-type: none"><li>Log in with your Fanshawe user name &amp; password.</li></ul>	<ul style="list-style-type: none"><li>On the Crestron panel, under <b>Display</b>, tap <b>On</b>.</li><li><b>Blackscreen</b> allows user to temporarily black out the projection. Useful when accessing private information such as eMail.</li></ul>	<ul style="list-style-type: none"><li>To connect a Laptop to the projector, connect a VGA cable into <b>Laptop Video*</b>.</li><li>To connect a <b>Microphone</b> to the room, connect a 1/4" cable into <b>Mic*</b>.</li><li>To connect Laptop Audio to the room, connect an AUX cable into <b>Laptop Audio*</b>.</li></ul>	<ul style="list-style-type: none"><li>On the Crestron panel, under <b>Sources</b>, tap <b>Laptop</b>.</li><li>Then tap Send to Projector.</li></ul>

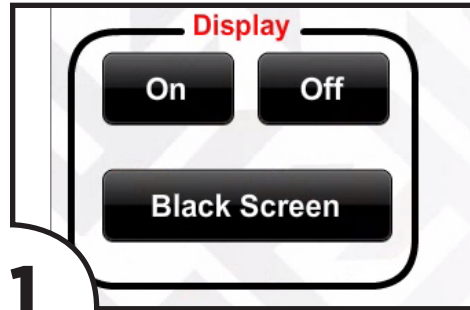
## MODERN PODIUM (TSW760)

<b>1 Turn on the Computer</b>	<b>2 Activate the Projector</b>	<b>3 Connect an External Device (Optional)</b>	<b>4 Adjust Source</b>
<ul style="list-style-type: none"><li>Log in with your Fanshawe user name &amp; password.</li></ul>	<ul style="list-style-type: none"><li>On the Crestron panel, under <b>Display</b>, tap <b>On</b>.</li><li><b>Blackscreen</b> allows user to temporarily black out the projection. Useful when accessing private information such as eMail.</li></ul>	<ul style="list-style-type: none"><li>To connect a <b>Laptop</b> to the projector, connect a VGA or HDMI cable to the podium*.</li><li>To connect a <b>Microphone</b> to the room, connect a 1/4" cable to the podium*.</li></ul>	<ul style="list-style-type: none"><li>On the Crestron panel, under <b>Sources</b>, tap <b>HDMI</b>.</li></ul>

# CLASSROOM PODIUM QUICK START GUIDE

## AIRMEDIA PODIUM (LPT3)

A solution for today's classroom, AirMedia® technology makes it simple to connect wirelessly. AirMedia 2 is available for Windows, MacOS, iOS, Android & Chrome OS.



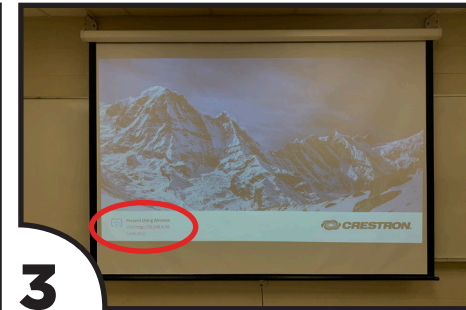
**1 Activate the Projector**

- On the Crestron panel, under **Display**, tap **On**.
- **Blackscreen** allows user to temporarily black out the projection. Useful when accessing private information such as eMail.



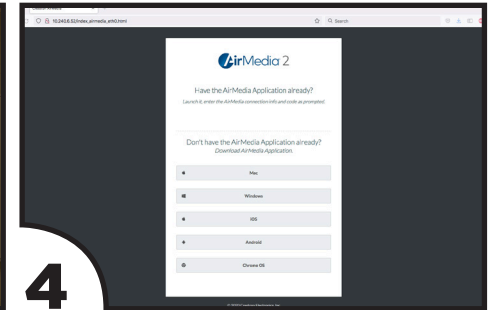
**2 Activate AirMedia**

- On the Crestron panel, under **Sources**, tap **AirMedia**.
- A Name and Login Code will appear on the Crestron panel and the projector.



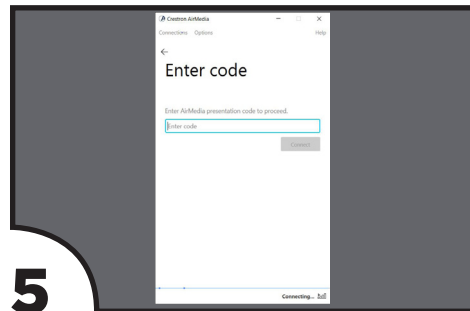
**3 Connect a Mobile Device**

- On the mobile device, launch a web browser and navigate to the **IP Address** displayed on the Projector.
- The IP address and code will vary.
- Ensure you are connected to the "FanshaweCollege" wireless network.



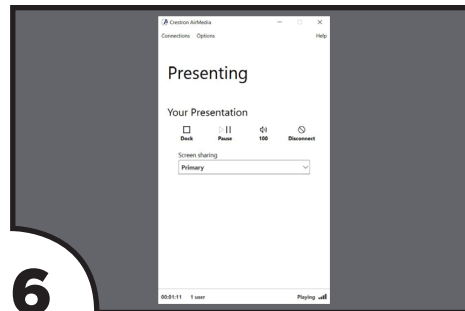
**4 Download AirMedia Application**

- If the AirMedia Application has been installed, it will launch and you may proceed to step 5.
- If not, Click on the download link and run the AirMedia installer.



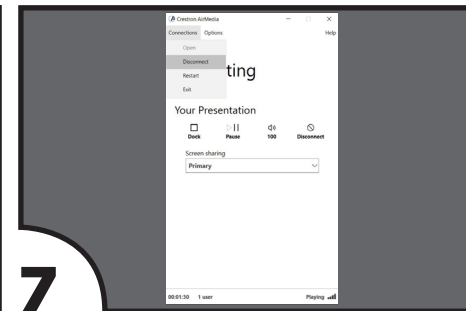
**5 Enter Presentation Code**

- On the mobile device, enter the IP Address if required, then enter the **4-digit code** displayed on the projector or Crestron display.
- Click Connect to present the screen of the mobile device.



**6 Presentation Controls**

- **Dock:** The device no longer shares its screen but remains connected.
- **Pause:** Start or freeze the device screen.
- **Volume:** Control the volume of the Wall Display
- **Pause:** Start or freeze the device screen.
- **Disconnect:** End connection.



**7 Close Connection**

- When finished, select **Exit** under Connections menu.

**\*Podium Connection Kits** contain all the necessary cables & adapters to connect an external device. They can be borrowed from Media Services in D1025.

**\*Classroom Microphones** can be borrowed from Media Services in D1025.